

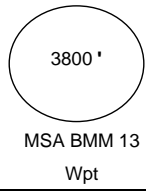
**FOOB
BMM**

Air Affaires Gabon

25-oct-05

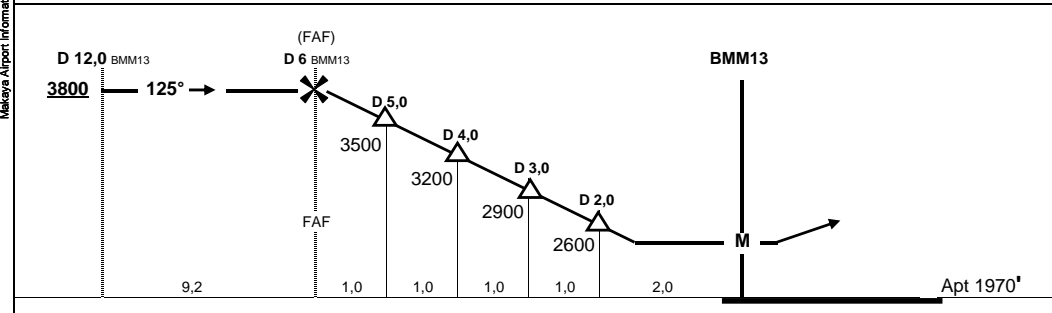
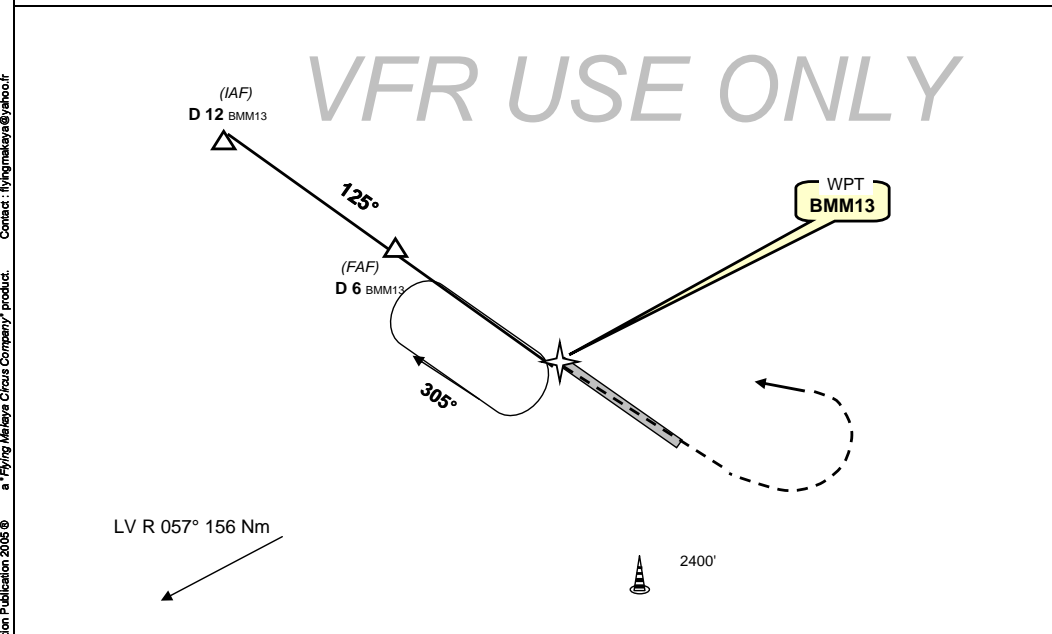
Bitam, GABON
GPS Rwy 13

Auto info 118,10 vhf			Alt setting with Oyem twr : 118,40 vhf		
Brazza 8903 HF, 128,9 VHF			2AG OPS	128,70 VHF	8970 HF
Wpt	Final Apch Crs	MDA (H)	Apt Elev	Rwy Lenght	Rwy Texture
BMM13	125°	2400' (430')	1970'	1500 m 4900'	LATERITE



Missed App : Climb STRAIGHT AHEAD to 3000', then turn LEFT climbing to 3800' to rejoin BMM13 and hold

Melaka Airport Information Publication 2005 © a "Flying Malaysia Circus Company" product. Contact: flyingmalaysia@yahoo.fr



BMM13 N 02° 04.89' / E 011° 29.11'	CIRCLE TO LAND					
IAF stand within Equatorial Guinea territory						
Gnd speed-Kts	70	90	100	120	140	160
Descent gradient 5,0%	350 fpm	450 fpm	500 fpm	600 fpm	700 fpm	800 fpm
FAF at Mapt	5:09	04:00	03:36	03:00	02:34	02:15

MDA (H) 2400' (430')

NIGHT: Not Authorized

Change : QFU on vertical profile