

FOGK

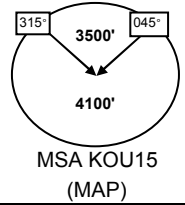
AIP Makaya

KOULAMOUTOU, GABON

11-nov-08

GPS or NDB Rwy 15

| | |
|-------------------------|-----------------|
| Koulamoutou Info 122.75 | Auto Info 118.1 |
| Mvengué Tour 118.2 | |

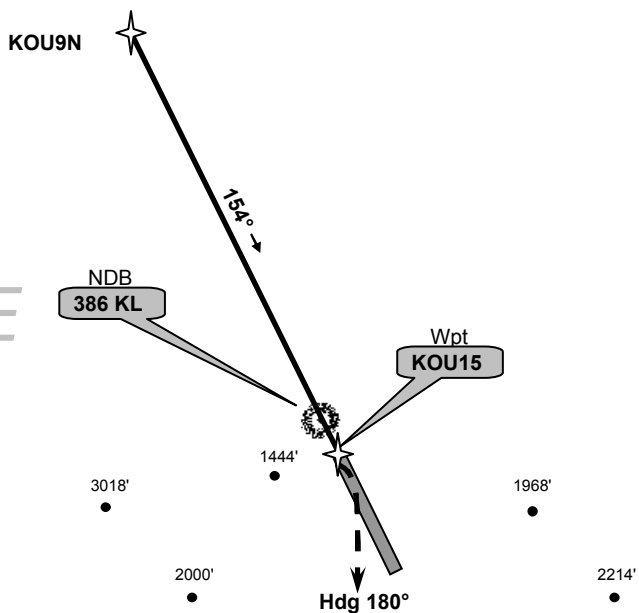


| Wpt | Final Apch Crs | MDA(H) | Apt Elev | Rwy Length | Texture |
|-------|----------------|--------------|----------|------------|---------|
| KOU15 | 154° | 1700' (653') | 1047' | 1770 m | ASPHALT |

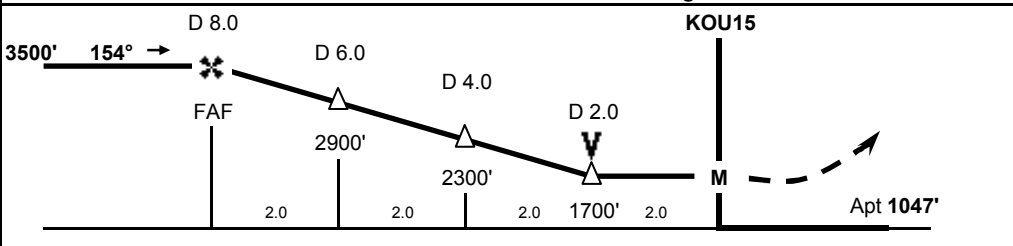
Missed App: Climb STRAIGHT AHEAD to 2000', then turn RIGHT heading 180° climbing to 4100'.

Contact : sebgrandclém@yahoo.com

VFR USE ONLY



Sébastien Grand-Clément 2008 ©



| | | | | | | | |
|-----------------------|-----------------------------|------|------|------|------|------|----------------------------|
| KOU15 | S 01°10.62' / E 012°26.20' | | | | | | STRAIGHT-IN-LANDING RWY 15 |
| KOU9N | Radial 334° from KOU15, 9NM | | | | | | |
| MDA(H) 1700' (653') | | | | | | | |
| Gnd speed - Kts | 70 | 90 | 100 | 120 | 140 | 160 | NIGHT: Not Authorized |
| Descent gradient 5.0% | 350 | 450 | 500 | 600 | 700 | 800 | |
| MAP at KOU15 or KL | 6:51 | 5:20 | 4:48 | 4:00 | 3:25 | 3:00 | |

Changes : MSA quadrants & missed approach altitudes