

**FOGL  
LCN**

**Air Affaires Gabon**

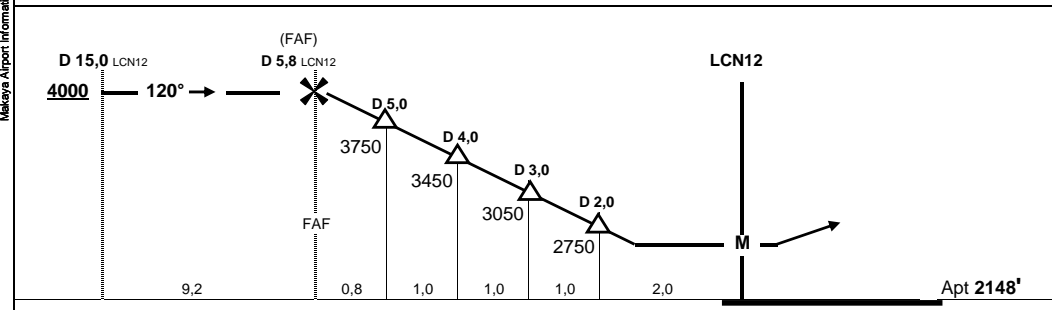
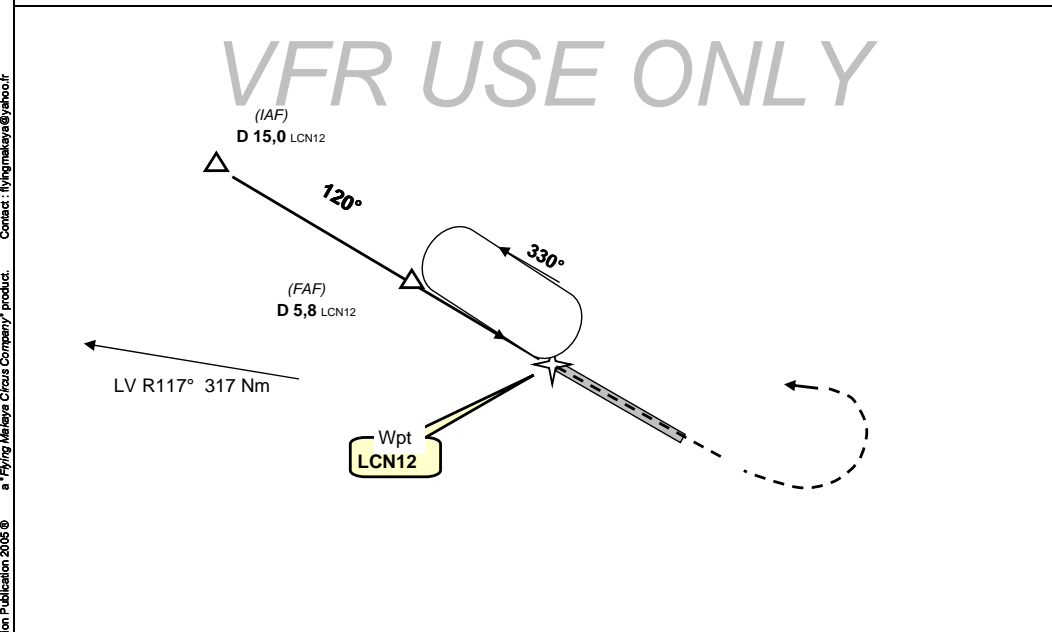
**26-oct-05**

Leconi, Gabon  
GPS Rwy 12

Mvengué App : 118,20			Alt setting with Mvengué			<div style="border: 1px solid black; border-radius: 50%; width: 40px; height: 40px; display: flex; align-items: center; justify-content: center; margin: 0 auto;"> <span style="font-size: 18px; font-weight: bold;">4000'</span> </div> <p>MSA LCN 12 Wpt</p>
Auto Info 118,10 / Brazza 8903 HF, 128,9 VHF			2AG OPS 128,70 VHF 8970 HF			
Wpt	Final Apch Crs	MDA (H)	Apt Elev	Rwy Lenght	Rwy Texture	
<b>LCN12</b>	<b>120°</b>	<b>2600</b> (452)	<b>2148'</b>	<b>1280 m</b> 3900'	<b>Grass &amp; Gravel</b>	

**Missed App** : Climb STRAIGHT AHEAD to 3000', then turn LEFT climbing to 4000' to rejoin LCN12 and hold

Melaka Airport Information Publication 2005 © a "Flying Malaysia Circus Company" product. Contact: flyingmelaka@yahoo.fr



<b>LCN12</b> S 01° 34.07' / E 014° 16.80'							<p>CIRCLE TO LAND</p> <p>MDA (H) 2600 (452)</p> <p><b>NIGHT: Not Authorized</b></p>
Gnd speed-Kts	70	90	100	120	140	160	
Descent gradient 5,0%	350 fpm	450 fpm	500 fpm	600 fpm	700 fpm	800 fpm	
FAF at Mapt	04:58	03:52	03:28	02:54	02:29	02:10	

Change : Timing