

**FOGG  
MBG**

**Air Affaires Gabon**

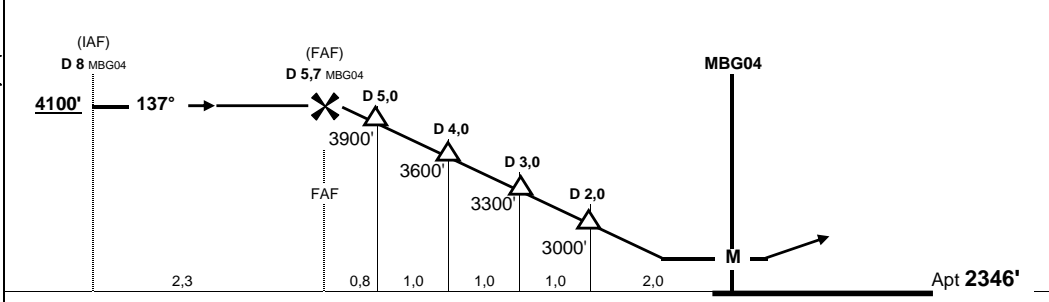
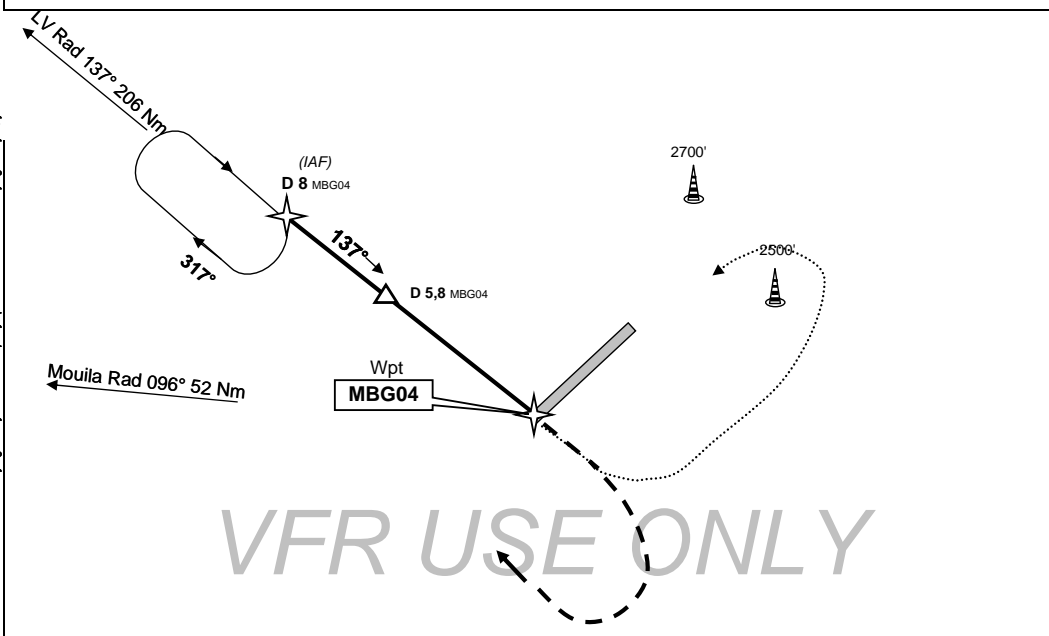
Mbigou, GABON  
GPS A

21-nov-05

Auto Info 118,10			Alt set with Mvengué Approach: 118,2			<div style="border: 1px solid black; border-radius: 50%; width: 40px; height: 40px; display: flex; align-items: center; justify-content: center; margin: 0 auto;"> <span style="font-size: 1.2em; font-weight: bold;">3500'</span> </div> <p>MSA MBG 04 (within 25 Nm)</p>
Brazza info 8903 HF, 128,9 VHF			2AG OPS 128,70 VHF 8970 HF			
Wpt	Final Apch Crs	MDA (H)	Apt Elev	Rwy Lenght	Texture	
<b>MBG04</b>	<b>137°</b>	<b>2900'</b> (554')	<b>2346'</b>	<b>900 m</b> 2950'	<b>LATERITE</b>	

**Missed App:** Climb STRAIGHT AHEAD to 3500', then turn Right climbing to 4100' to rejoin MBG04 D8 and hold

Mekeya Airport Information Publication 2006 © a "Flying Mekeya Circus Company" product. Contact: flyingmekeya@yahoo.fr



<b>MBG04</b> S 01° 54.98' / E 011° 53.66'						
Circle to land procedure : fly overhead MBG04, then turn left to enter a left downwind for Rwy 22						
Gnd speed-Kts	70	90	100	120	140	160
Descent gradient 5,0%	350 fpm	450 fpm	500 fpm	600 fpm	700 fpm	800 fpm
FAF at Mapt						

CIRCLE TO LAND  
MDA (H) 2900' (554')

**NIGHT: Lights on request**

Changes : final course correction