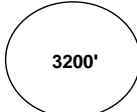


FOGR
LBQ

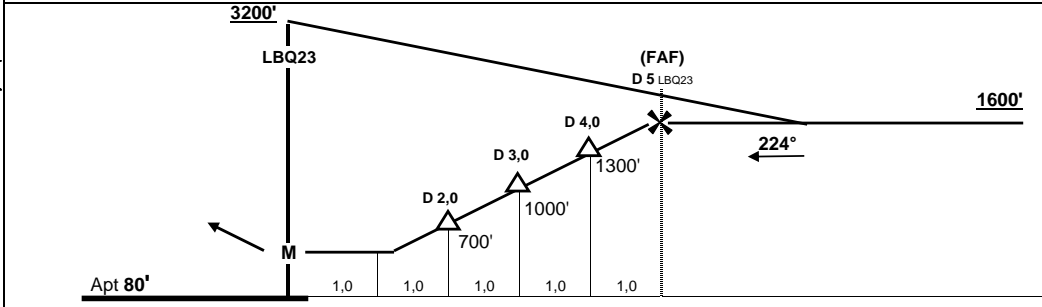
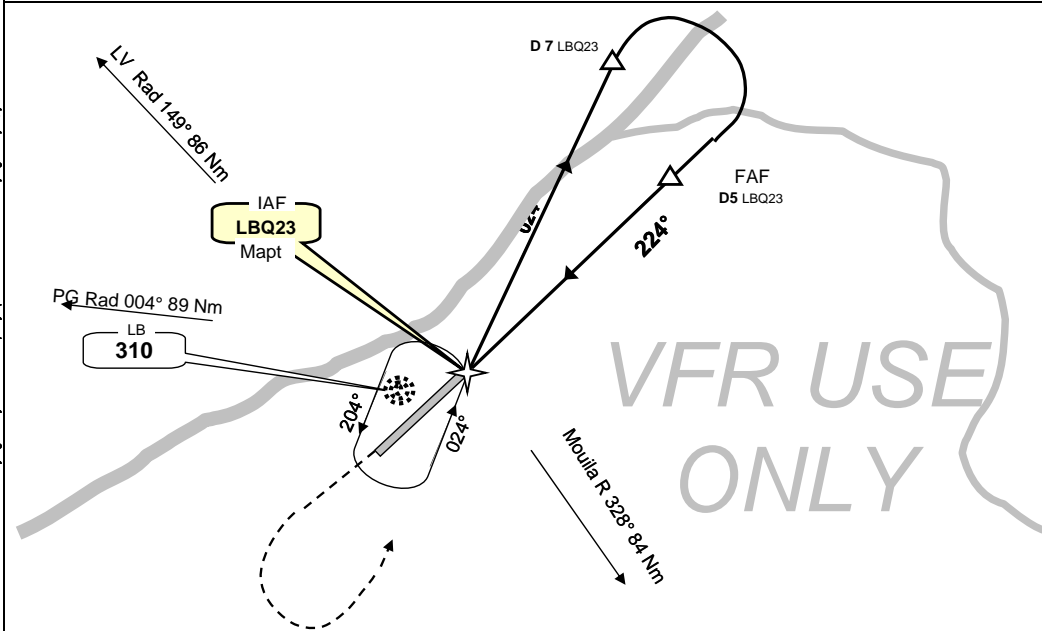
Air Affaires Gabon

Lambaréné, GABON
GPS Rwy 23

25-oct-05

Lambaréné info : 118,60 vhf			2AG OPS 128,70 VHF 8970 HF			 <p>3200' MSA LbQ23 (MAP)</p>
Libreville Control : 126,50 vhf			Brazza info 8903 HF 128,90 VHF			
Wpt	Final Apch Crs	MDA (H)	Apt Elev	Rwy Lenght	Runway texture	
LBQ23	227°	650' (570')	80'	1800 m 5900'	ASPHALT	

Missed App : Climb STRAIGHT AHEAD to 2000', then turn Left climbing to 3200' to rejoin LBQ23 and hold



LBQ23 S 00° 41.98' / E 010° 14.98'							CIRCLE TO LAND
Procedure turn protected for 175 Kts Max							
MDA (H) 650' (570')							
Gnd speed-Kts	70	90	100	120	140	160	NIGHT: Not Authorized
Descent gradient 5,0%	350 fpm	450 fpm	500 fpm	600 fpm	700 fpm	800 fpm	
FAF at Mapt	4:17	3:20	3:00	2:30	2:08	1:52	

Change : new 2AG edition

Mekeya Airport Information Publication 2006 ©
 a "Flying Mekeya Circus Company" product.
 Contact : flyingmekeya@yahoo.fr