

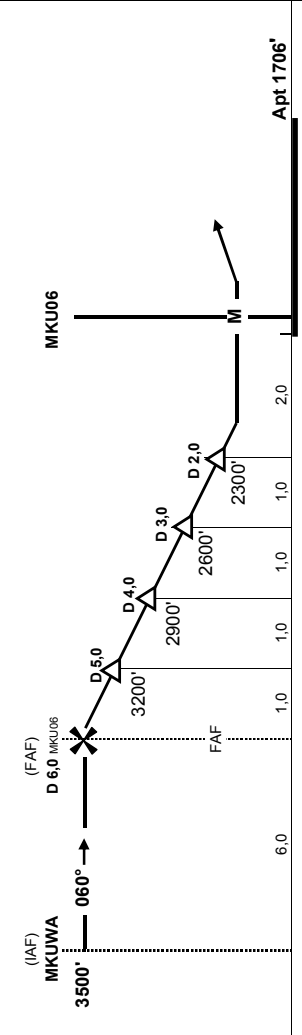
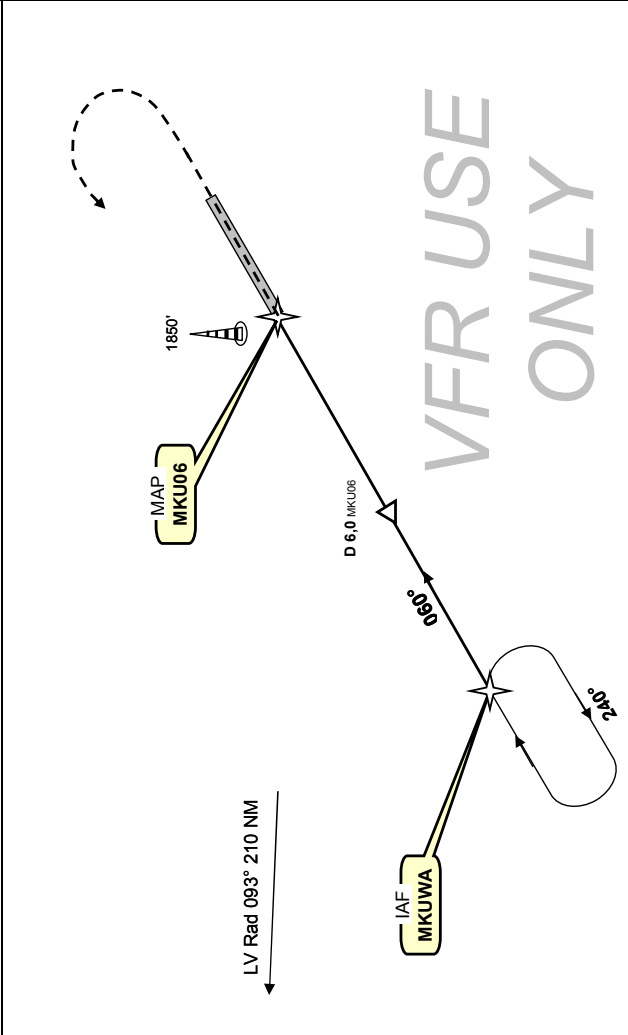
**FOOK
MKU**

AIP Makaya
23-aout-09

Makokou , GABON
GPS Rwy 06

Auto Info: 118,10 MHz		Makokou Info: 118,5 MHz	
Brazza Info: 8903 KHz / 128,9 MHz			
Wpt	Final Apch Crs	MDA (H)	Apt Elev
MKU06	060°	2100' (394')	1706'
Rwy Length 1800 m 5900'		Rwy Texture	Asphalt
3500'		MSA MKU06 Wpt	

Missed App : Climb STRAIGHT AHEAD to 1200' then turn LEFT climbing to 1800' to rejoin MKUWA and hold.



MKU06 N 00° 34.50' / E 012° 53.05'		CIRCLE TO LAND				
MKUWA MKU06 Rad 240° 12 Nm		MDA (H) 2100' (394')				
Rwy 06 Slight downslope		NIGHT: Not Authorized				
Gnd speed-Kts	70	90	100	120	140	160
Descent gradient 5.0%	350 fpm	450 fpm	500 fpm	600 fpm	700 fpm	800 fpm
FAF at Mapt	5:08	4:40	3:36	3:00	2:34	2:15

Change : full re-edition, typo in MDA, magnetic variation, antenna, runway surface.