

FOOR
LTL

Air Affaires Gabon

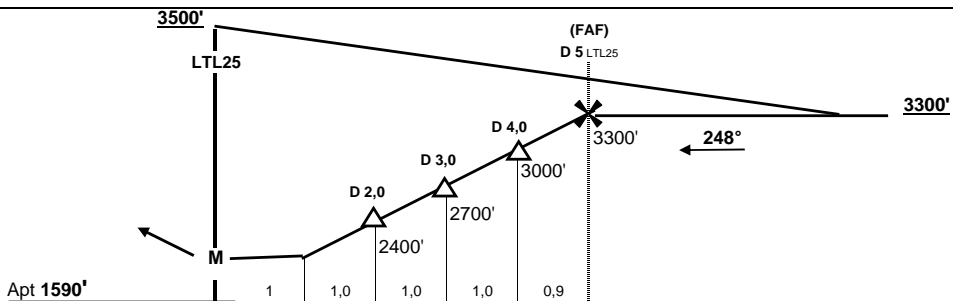
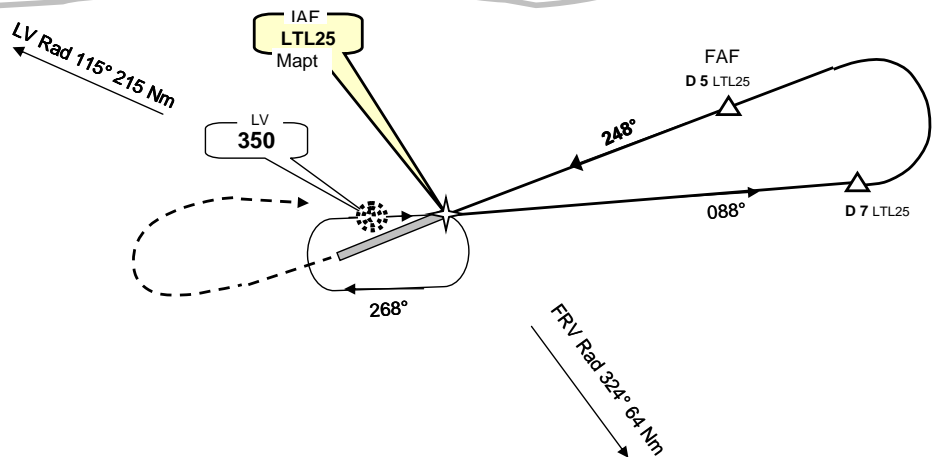
Lastourville, GABON
GPS Rwy 25

26-oct-05

M'vengué APP : 118,20 vhf			2AG OPS 128,70 VHF 8970 HF			<div style="border: 1px solid black; border-radius: 50%; width: 40px; height: 40px; display: flex; align-items: center; justify-content: center;"> 3500' </div> MSA LTL25 (MAP)
Brazza info 8903 HF 128,90 VHF			Auto Info 118,10 VHF			
Wpt	Final Apch Crs	MDA (H)	Apt Elev	Rwy Lenght	Runway texture	
LTL25	248°	2200' (610')	1590'	1900 m 6200'	LATERITE	

Missed App : Climb STRAIGHT AHEAD to 3000', then turn Right climbing to 3500' to rejoin LTL25 and hold

VFR USE ONLY



LTL25 S 00° 49.34' / E 012° 45.23'

Procedure turn protected for 175 Kts Max

CIRCLE TO LAND

MDA (H) 2200' (610')

Gnd speed-Kts	70	90	100	120	140	160
Descent gradient 5,0%	350 fpm	450 fpm	500 fpm	600 fpm	700 fpm	800 fpm
FAF at Mapt						

NIGHT: Authorized