

ZZZZ
MPG

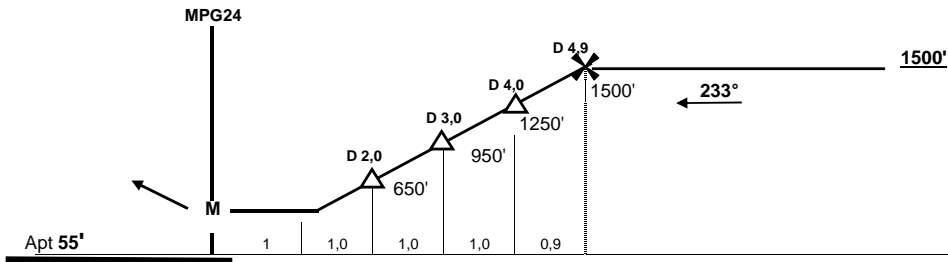
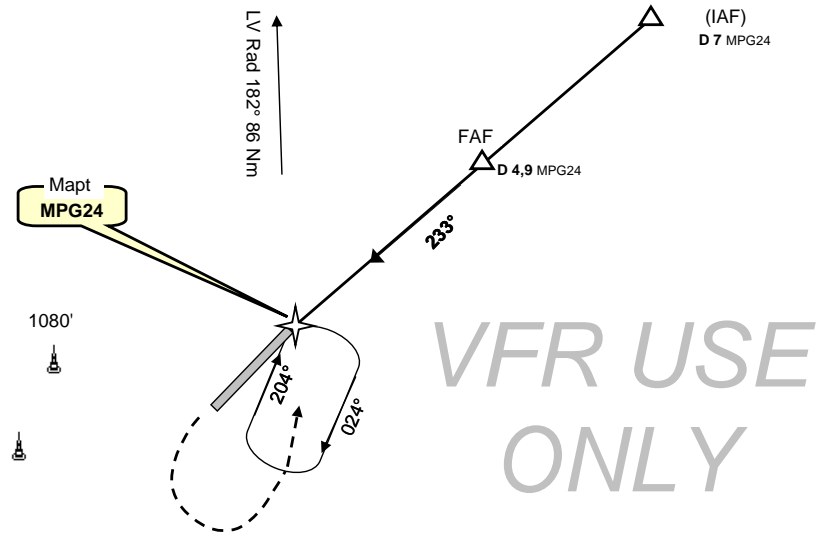
Air Affaires Gabon

Mpaga, GABON
GPS Rwy 24

26-oct-05

Auto Info : 118,10 VHF			2AG OPS 128,70 VHF 8970 HF			<div style="border: 1px solid black; border-radius: 50%; width: 40px; height: 40px; display: flex; align-items: center; justify-content: center; margin: 0 auto;"> 1500' </div>
Libreville Control : 126,50 VHF			Brazza Info 8903 HF 128,90 VHF			
Wpt	Final Apch Crs	MDA (H)	Apt Elev	Rwy Lenght	Runway texture	MSA MPG24 (MAP)
MPG24	233°	455' (400')	55'	1000 m 3280'	LATERITE	

Missed App : Climb STRAIGHT AHEAD to 1500', then turn Left climbing to 1800' to rejoin BTA23 and hold



MPG 24 N 00° 56.60' / E 009° 26.78'

CIRCLE TO LAND

MDA (H) 455' (400')

NIGHT : Not Authorized

Gnd speed-Kts	70	90	100	120	140	160
Descent gradient 5,0%	350 fpm	450 fpm	500 fpm	600 fpm	700 fpm	800 fpm
FAF at Mapt	4:12	3:16	2:56	2:27	2:06	1:50

Change : new 2AG edition