

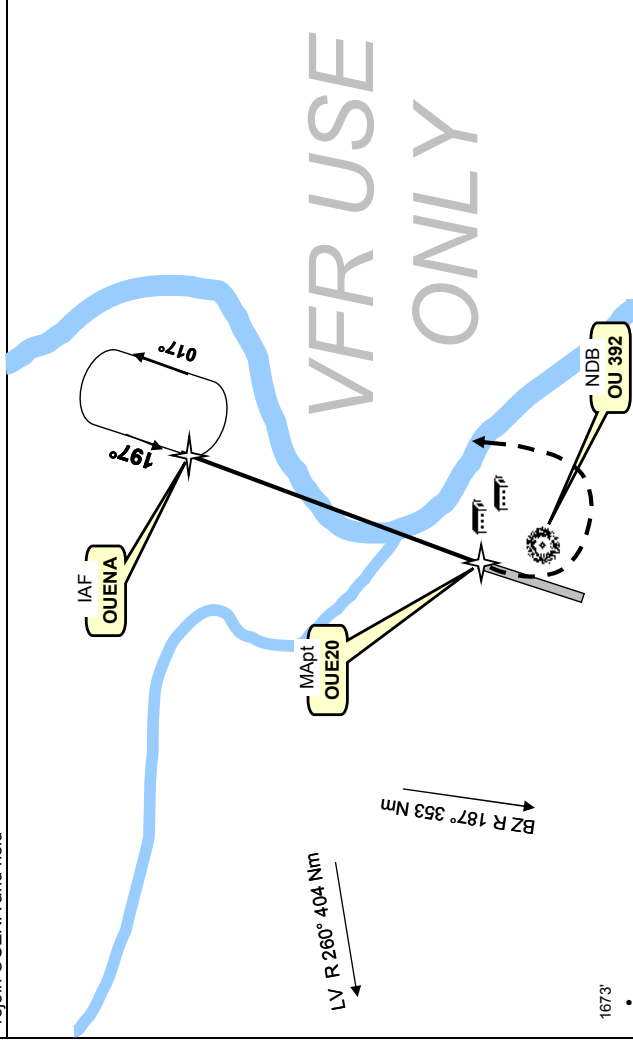
FCOU
OUE

A/P Makaya
30-mars-09

OUESSO, CONGO
GPS Rwy 20

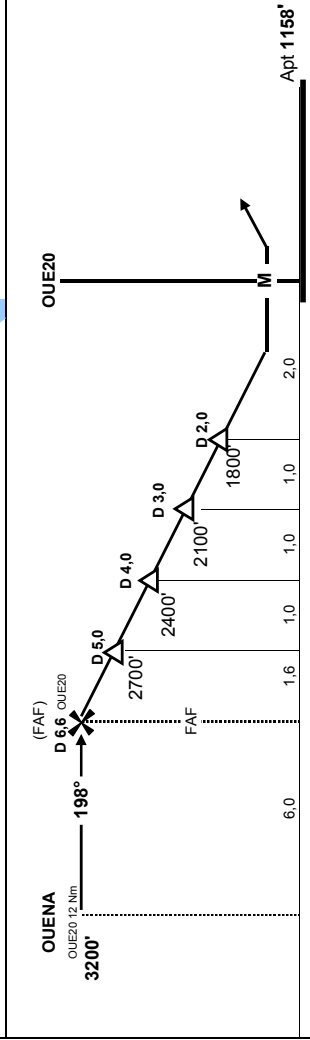
Ouesso Info : 118.10 MHz		Runway texture		<div style="border: 1px solid black; border-radius: 50%; padding: 5px; display: inline-block;"> 3200' <small>(Grid 4300')</small> </div>
Braza Info 8903 KHz / 128.90 MHz		TAR & CONCRETE		
Wpt	Final MDA (H)	Apt Elev	Rwy Length	MSA OUE20 (IAF)
OUE20	1700' (442')	1158'	2050 m 6726'	

Missed App : Climb STRAIGHT AHEAD to 2500', then turn Left climbing to 3200' to rejoin OUENA and hold



Contact : sebgrandem@yahoo.com

Sebastien Grand-Clement 2009 ©



OUE20	N 01° 37.51' / E 016° 02.38'					
OUENA	Radial 017° from OUE20, 12NM					
OUE02	N 01° 36.45' / E 016° 02.13'					
Gnd speed-Kts	70	90	100	120	140	160
Descent gradient 5.0%	350	450	500	600	700	800
FAF to M/Apt						
CIRCLE TO LAND						
MDA (H) 1700' (442')						
NIGHT: Not Authorized						

Changes : OFU, Grid, MORA, OUE02 Coordinates, MDA