

**FOGQ**  
**OKN**

**Air Affaires Gabon**

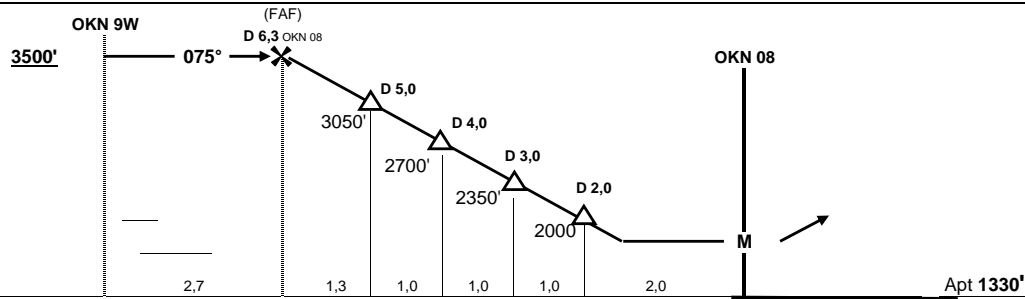
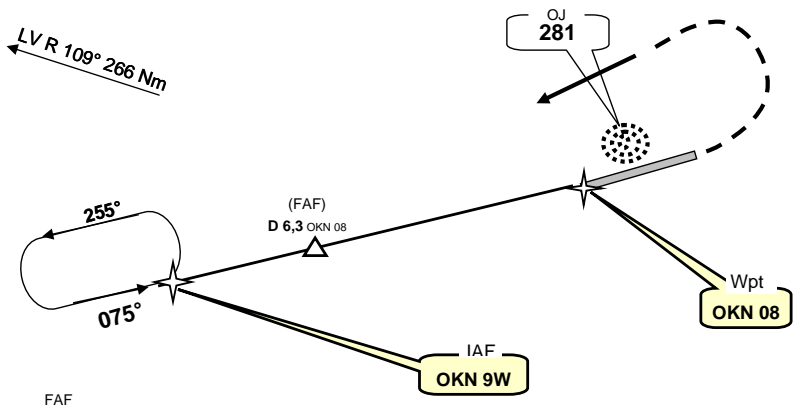
OKONDJA, GABON  
GPS Rwy 08

26-oct-05

|   |                   |                     |                                |                        |                   |  |
|---|-------------------|---------------------|--------------------------------|------------------------|-------------------|--|
| Okondja info : 118,10 vhf                 |                   |                     | 2AG OPS 128,70 VHF 8970 HF     |                        |                   | <div style="border: 1px solid black; border-radius: 50%; width: 40px; height: 40px; margin: 0 auto; display: flex; align-items: center; justify-content: center;"> <span style="font-size: 1.2em; font-weight: bold;">3500'</span> </div> <p>MSA OKN08<br/>(MAP)</p> |
| Alt setting with Mvengué App : 118,20 vhf |                   |                     | Brazza info 8903 HF 128,90 VHF |                        |                   |  |
| Wpt                                       | Final<br>Apch Crs | MDA (H)             | Apt<br>Elev                    | Rwy Lenght             | Runway<br>texture |  |
| <b>OKN08</b>                              | <b>075°</b>       | <b>1800'</b> (470') | <b>1330'</b>                   | <b>1600 m</b><br>5280' | <b>TAR</b>        |  |

**Missed App** : Climb STRAIGHT AHEAD to 3000', then turn Left climbing to 3500' to rejoin OKN 9W and hold

VFR USE ONLY



|  |         |         |         |         |         |         |
|--|---------|---------|---------|---------|---------|---------|
| <b>OKN 08</b> S 00° 40' 110 / E 013° 40' 030                     |         |         |         |         |         |         |
| <b>OKN 9W</b> R255° 9Nm from OKN 08 / S 00° 42.82' E 013° 31.46' |         |         |         |         |         |         |
| <b>Caution : Non standard Glide Path. 350' per Nm</b>            |         |         |         |         |         |         |
| Gnd speed-Kts  | 70      | 90      | 100     | 120     | 140     | 160     |
| Descent gradient 6,0%  | 400 fpm | 520 fpm | 580 fpm | 700 fpm | 820 fpm | 930 fpm |
| FAF at Mapt  | 04 : 58 | 03 : 52 | 03 : 29 | 02 : 54 | 02 : 29 | 02 : 10 |

CIRCLE TO LAND  
  
MDA (H) 1800' (470')  
  
**NIGHT: Not Authorized**

Change : Glide Path