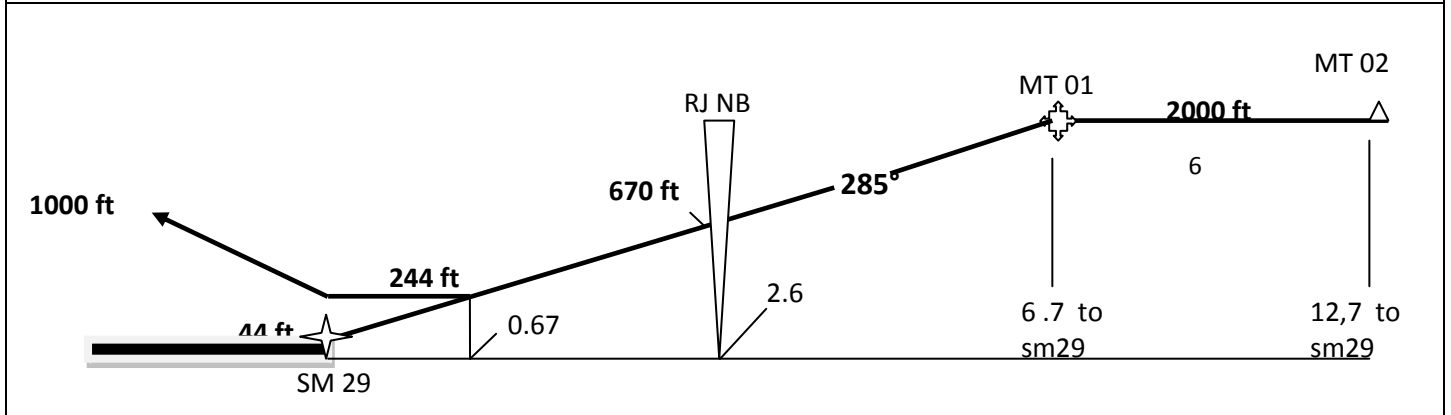
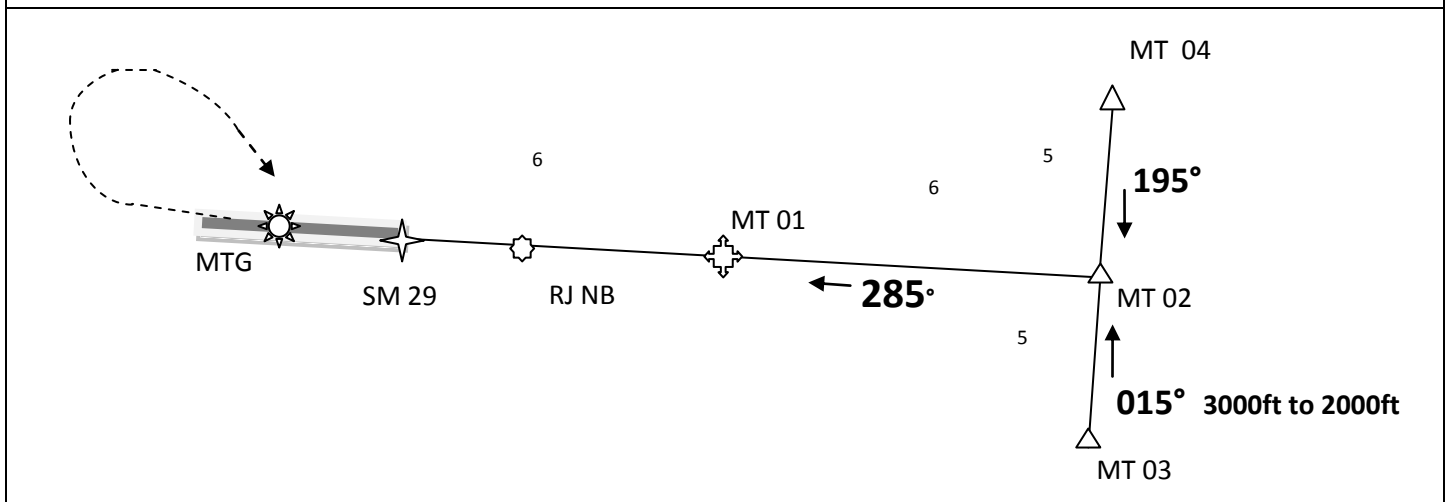


29/01/20010

ATIS		TRIPOLI <u>HLLT</u> 127,0	TRPOLI APPROACH 120,9 / 124,0			<p>MSA SM29</p>
MITIGA TOWER		126,3	Trans level 70 FL trans alt 5000ft			
WPT SM 29	FINAL APP COURSE 285	MDA (H) 240 ft (200)	APT ELEV 0040 ft	RWY LENGHT 11,001 ft 3353 m	RWY TEXTURE asphalt	

MISSED APP: climb on runway axis until 1000ft right turn and joint vertical MTG VOR and hold 2000ft.



D 1nm / 300 ft	D 2 nm / 600 ft	D 3 / 900 ft	D 4 / 1200 ft	D 5 / 1500 ft	D 6 / 1800 ft
Ground speed / KTS	70	90	100	120	140
Descent Gradient 5 %	350	450	500	600	700
Time to MAPT	5,06	3,57	3,36	3,00	2,31

SM29 N 32°53,3 E 013°18,3 MT 01 SM29/105/6.7 MT 02 SM29/105/12.7 MT03 MT02/195/5 MT04 MT02/015/5				Circle to Land	
				Not authorised south of airport	
				B	1000' (964)
Warning : RJ NDB position isn't correct on jeeppsen data base.		C	1000' (964)	3700m	

