

**FMST**  
TLR

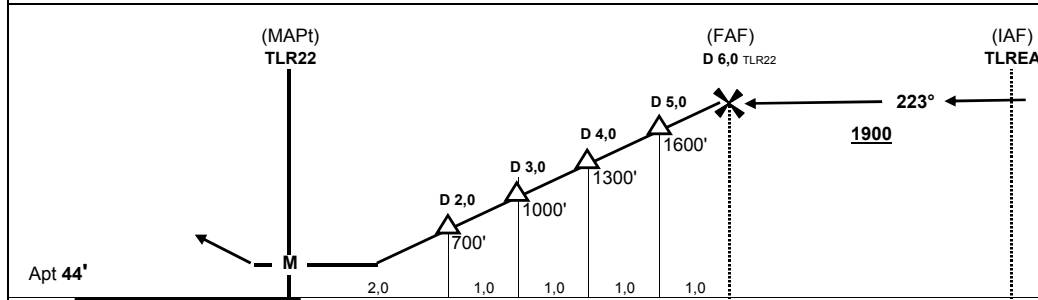
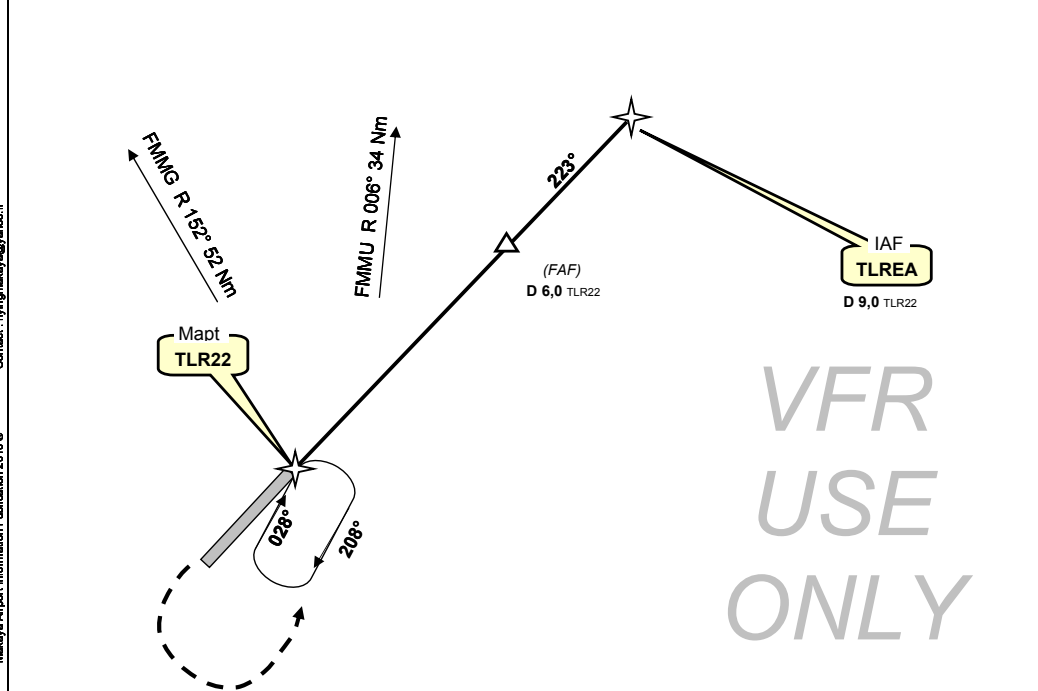
*Makaya plates*

Toliary, MADAGASCAR  
GPS Rwy 22

**14-mai-10**

Afis : 118,60 VHF			Tana : 128,90 VHF, 8879 HF, 5634 HF		
Auto Info : 118,10 VHF					
Wpt	Final Apch Crs	MDA (H)	Apt Elev	Rwy Lenght	Rwy Texture
<b>TLR22</b>	<b>223°</b>	<b>400'</b> (356')	<b>44'</b>	<b>2000 m</b> 6550'	<b>TAR</b>
					<div style="border: 1px solid black; border-radius: 50%; width: 40px; height: 40px; display: flex; align-items: center; justify-content: center; margin: 0 auto;"> <span style="font-size: 18px; font-weight: bold;">1900'</span> </div> <p>MSA TLR22 Grid Mora 3600'</p>

**Missed App** : climb straight ahead to 1500', then turn left climbing to 1900' and hold at TLR22.



<b>TLR22</b>	S 23° 22,522' / E 043° 43,930'						Straight In  <b>MDA (H) 400' (356')</b>  <b>NIGHT: Not Authorized</b>
<b>TLREA</b>	R 023°, 9 Nm from TLR22						
<b>TLR04</b>	S 23° 23,471' / E 043° 43,482'						
Grnd speed-Kts	70	90	100	120	140	160	
Descent gradient 5,0%	350 fpm	450 fpm	500 fpm	600 fpm	700 fpm	800 fpm	

change : TLR22 type correction and straight-in instead of circle-to-land