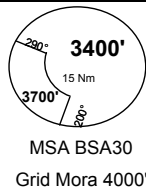


FEFS
BSA

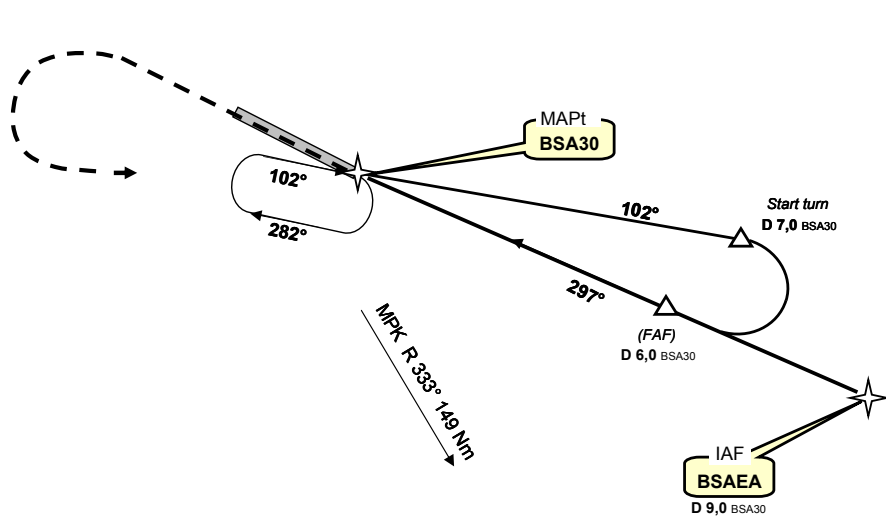
Jungle plates
15-mai-10

Bossangoa, CENTRAFRIQUE
GPS Rwy 30

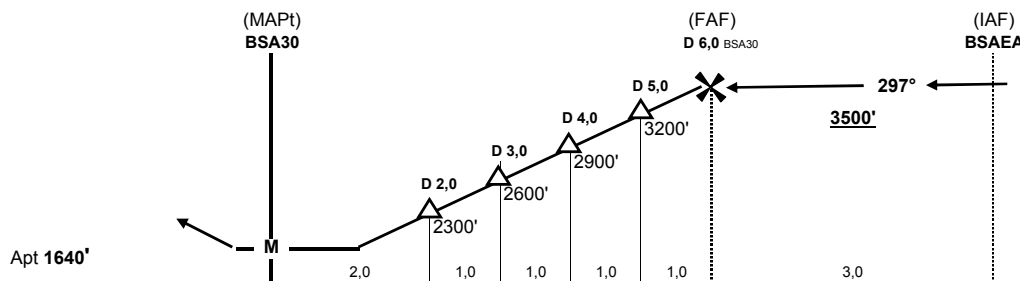
Auto Info : 118,10 VHF			Brazza : 127,10 VHF 8903 HF		
Bangui APP & TWR : 119,70					
Wpt	Final Apch Crs	MDA (H)	Apt Elev	Rwy Lenght	Rwy Texture
BSA30	297°	2100' (460')	1640'	1500 m 4900'	Laterite



Missed App : Climb straight ahead to 2800', then turn left climbing to 3500' to rejoin the hold at BSA30



VFR USE ONLY



BSA30 N 06° 29,729' / E 017° 25,342'
BSAEA R 117°, 9 Nm from BSA30
BSA12 N 06° 29,710' / E 017° 25,326'

Gnd speed-Kts	70	90	100	120	140	160
Descent gradient 5,0%	350 fpm	450 fpm	500 fpm	600 fpm	700 fpm	800 fpm

Straight in
MDA (H) 2100' (460')
NIGHT: Not Authorized

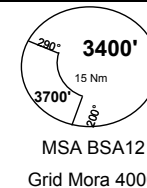
change : typos in waypoint names & minor editing

FEFS
BSA

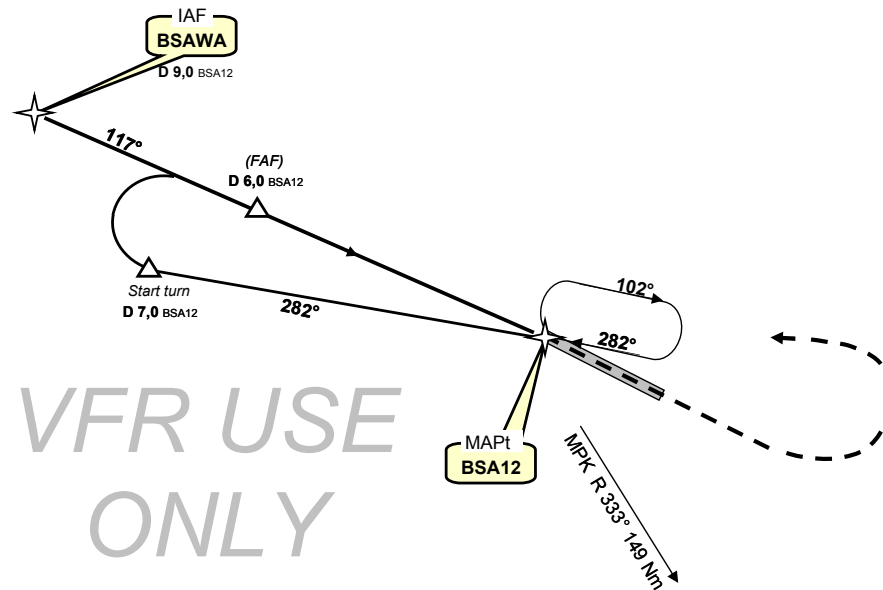
Jungle plates
15-mai-10

Bossangoa, CENTRAFRIQUE
GPS Rwy 12

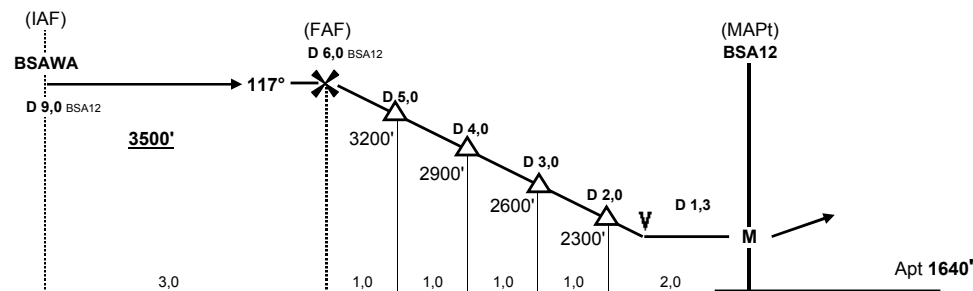
Auto Info : 118,10 VHF			Brazza : 127,10 VHF 8903 HF		
Bangui APP & TWR : 119,70					
Wpt	Final Apch Crs	MDA (H)	Apt Elev	Rwy Lenght	Rwy Texture
BSA12	117°	2100' (460')	1640'	1500 m 4900'	Laterite



Missed App : Climb straight ahead to 2800', then turn left climbing to 3500' to rejoin the hold at BSA12



VFR USE ONLY



BSA12 N 06° 29,710' / E 017° 25,326'
BSAWA R 297°, 9 Nm from BSA12
BSA30 N 06° 29,729' / E 017° 25,342'

Gnd speed-Kts	70	90	100	120	140	160
Descent gradient 5,0%	350 fpm	450 fpm	500 fpm	600 fpm	700 fpm	800 fpm

Straight in
MDA (H) 2100' (460')
NIGHT: Not Authorized

change : typos in waypoint names & minor editing