

FEFP
PAO

Jungle plates

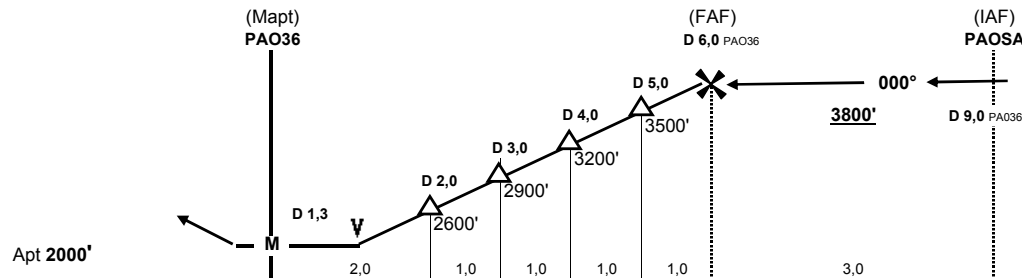
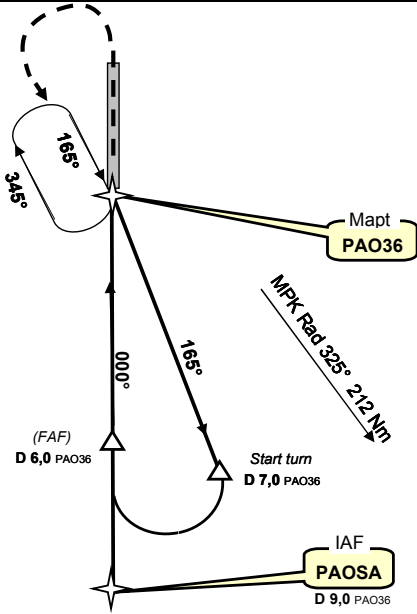
Paoua, CENTRAFRIQUE
GPS Rwy 36

15-mai-10

Auto Info : 118,10 VHF			Brazza : 127,10 VHF 8903 HF			<div style="border: 1px solid black; border-radius: 50%; width: 60px; height: 60px; display: flex; align-items: center; justify-content: center; margin: 0 auto;"> 3800' </div> <p>MSA PAO36 Grid Mora 4500'</p>
Bangui APP & TWR : 119,70						
Wpt	Final Apch Crs	MDA (H)	Apt Elev	Rwy Lenght	Rwy Texture	
PAO36	000°	2400' (400')	2000'	1100 m 3600'	Laterite	

Missed App : climb straight ahead to 3200', then turn left climbing to 3800'
to rejoin the hold at PAO36 and hold

VFR
USE
ONLY



PAO36	N 07° 14,743' / E 016° 26,451'					
PAOSA	R 180°, 9 Nm from PAO36					
PAO18	N 07° 15,510' / E 016° 26,455'					
Gnd speed-Kts	70	90	100	120	140	160
Descent gradient 5,0%	350 fpm	450 fpm	500 fpm	600 fpm	700 fpm	800 fpm

Straight in
MDA (H) 2400' (400')

NIGHT: Not Authorized

change : airport elevation, added VDP & PAOSA definition

FEFP
PAO

Jungle plates

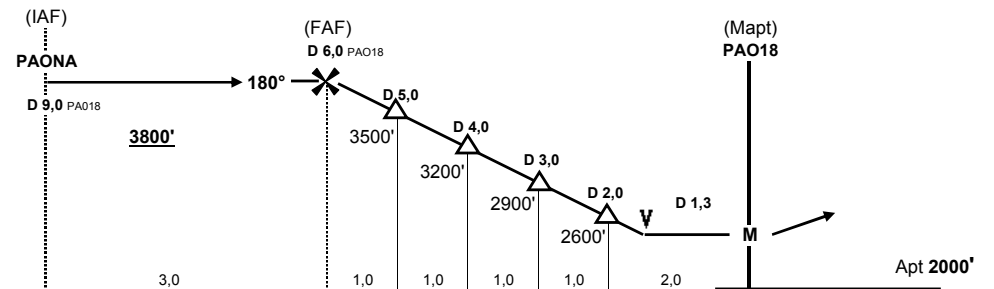
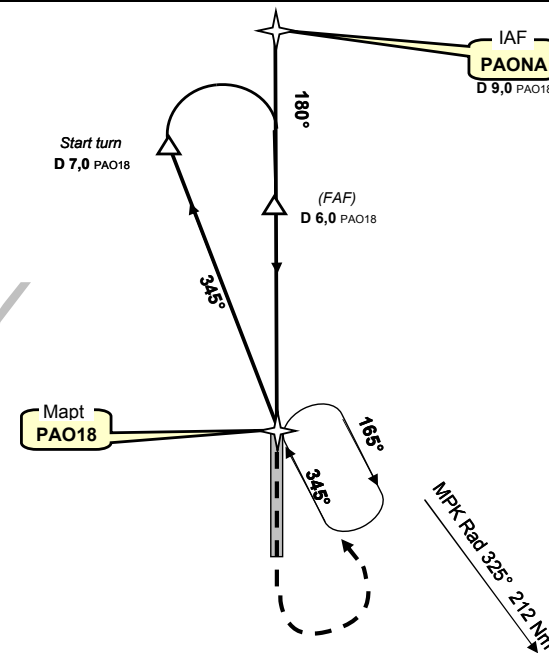
Paoua, CENTRAFRIQUE
GPS Rwy 18

15-mai-10

Auto Info : 118,10 VHF			Brazza : 127,10 VHF 8903 HF			<div style="border: 1px solid black; border-radius: 50%; width: 60px; height: 60px; display: flex; align-items: center; justify-content: center; margin: 0 auto;"> 3800' </div> <p>MSA PAO18 Grid Mora 4500'</p>
Bangui APP & TWR : 119,70						
Wpt	Final Apch Crs	MDA (H)	Apt Elev	Rwy Lenght	Rwy Texture	
PAO18	180°	2400' (400')	2000'	1100 m 3600'	Laterite	

Missed App : climb straight ahead to 3200', then turn left climbing to 3800'
to rejoin the hold at PAO18 and hold

VFR
USE
ONLY



PAO18	N 07° 15,510' / E 016° 26,455'					
PAONA	R 360°, 9 Nm from PAO18					
PAO36	N 07° 14,743' / E 016° 26,451'					
Gnd speed-Kts	70	90	100	120	140	160
Descent gradient 5,0%	350 fpm	450 fpm	500 fpm	600 fpm	700 fpm	800 fpm

Straight in
MDA (H) 2400' (400')

NIGHT: Not Authorized

change : final approach course, plate title & PAONA definition