

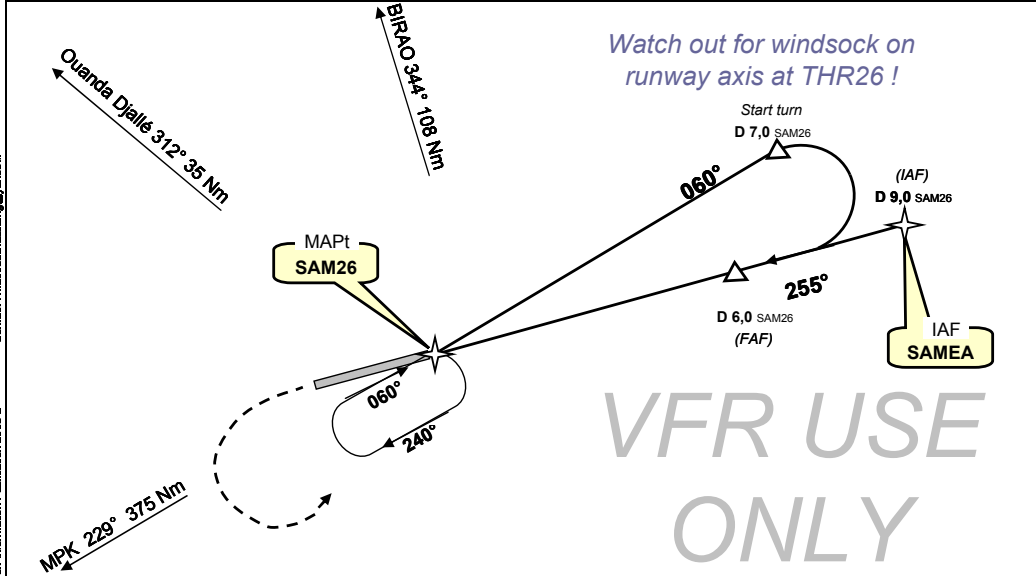
ZZZZ
SAM

Jungle plates
18-mai-10

Sam Ouandja, CENTRAFRIQUE
GPS Rwy 26

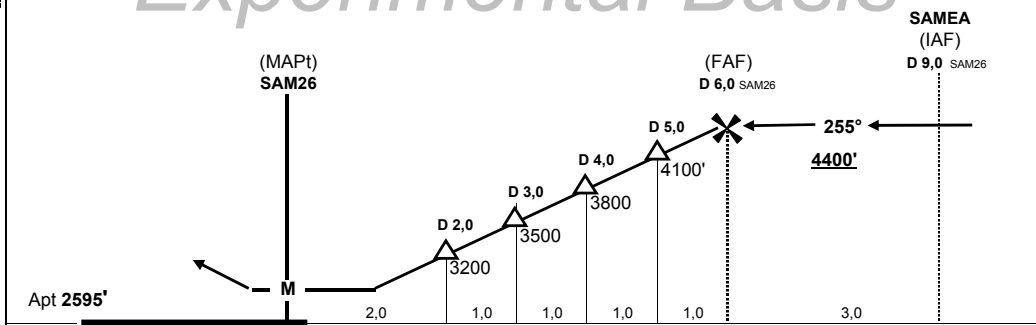
Auto Info : 118,10 VHF			Brazza : 127,10 VHF 8903 HF			
Bangui APP & TWR : 119,70						
Wpt	Final Apch Crs	MDA (H)	Apt Elev	Rwy Length	RWY Texture	
SAM26	255°	3100' (505')	2595'	1000 m 3280'	Laterite	

Missed App : Climb STRAIGHT AHEAD to 3800', then turn left climbing to 4400' to rejoin SAM26 and hold (Curved runway / both runway QFU do not match)



VFR USE ONLY

Experimental Basis



SAM26	N 08° 31,479' / E 023° 14,767' (to be checked)						STRAIGHT IN
SAMEA	R 255°, 9 Nm from SAM26						
SAM08	N 08° 31,420' / E 023° 14,098'						
Gnd speed-Kts	70	90	100	120	140	160	MDA (H) 3100' (505')
Descent gradient 5,0%	350 fpm	450 fpm	500 fpm	600 fpm	700 fpm	800 fpm	
							NIGHT: Not Authorized

changes : holding pattern inbound course, PT outbound course & missed approach procedure turn description (LEFT instead of RIGHT)

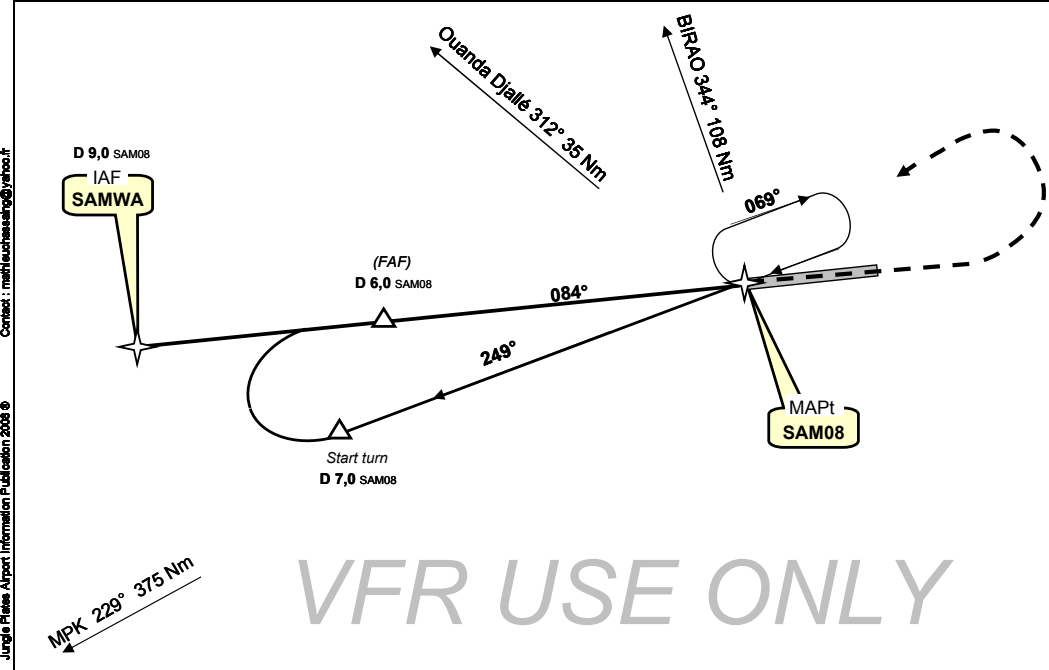
ZZZZ
SAM

Jungle plates
18-mai-10

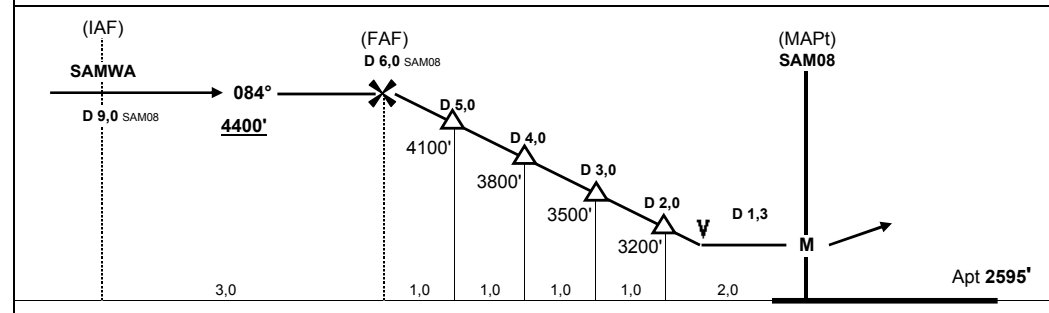
Sam Ouandja, CENTRAFRIQUE
GPS Rwy 08

Auto Info : 118,10 VHF			Brazza : 127,10 VHF 8903 HF			
Bangui APP & TWR : 119,70						
Wpt	Final Apch Crs	MDA (H)	Apt Elev	Rwy Length	Rwy Texture	
SAM08	084°	3100' (505')	2595'	1000 m 3280'	Laterite	

Missed App : climb straight ahead to 3800', then turn left climbing to 4400' to rejoin the hold at SAM08. (Curved runway / both runway QFU do not match)



VFR USE ONLY



SAM08	N 08° 31,420' / E 023° 14,098'						STRAIGHT IN
SAMWA	R 264°, 9 Nm from SAM08						
SAM26	N 08° 31,479' / E 023° 14,767' (to be checked)						
Gnd speed-Kts	70	90	100	120	140	160	MDA (H) 3100' (505')
Descent gradient 5,0%	350 fpm	450 fpm	500 fpm	600 fpm	700 fpm	800 fpm	
							NIGHT: Not Authorized

changes : typo in minima