

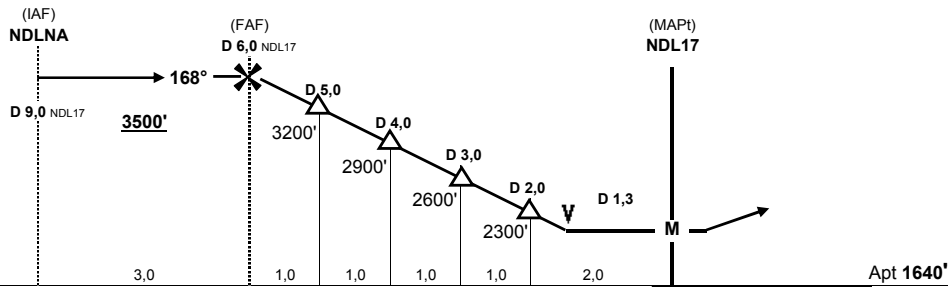
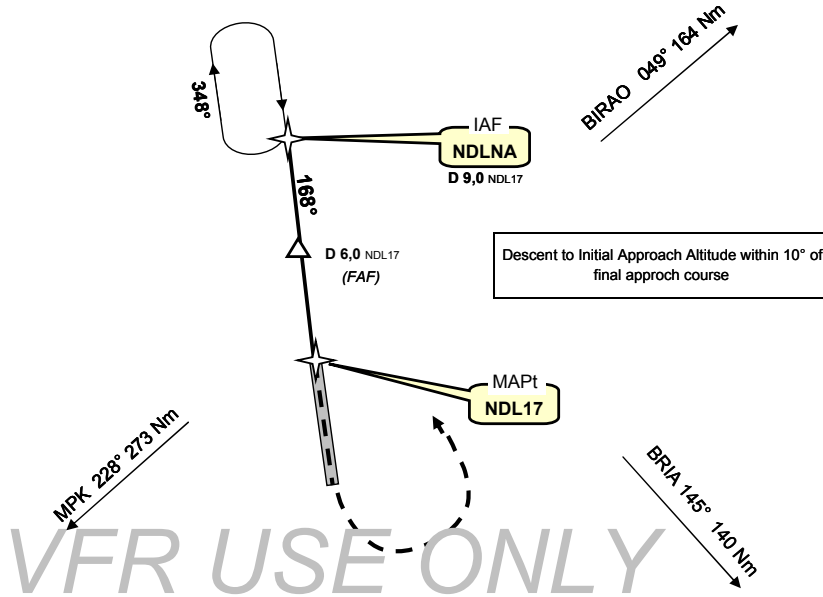
FEFN
NDL

Jungle plates
17-mai-10

N'Délé, CENTRAFRIQUE
GPS Rwy 17

Auto Info : 118,10 VHF			Brazza : 127,10 VHF 8903 HF			3500'
Bangui APP & TWR : 119,70						
Wpt	Final Apch Crs	MDA (H)	Apt Elev	Rwy Lenght	Rwy Texture	
NDL17	168°	2100' (460')	1640'	1500 m 4900'	Laterite	MSA NDL17 Grid Mora 4200'

Missed App : climb straight ahead to 2800', then turn left climbing to 3500' to rejoin the hold at IAF NDLNA



NDL17	N 08° 26.002' / E 020° 38.034'					
NDLNA	R 348°, 9 Nm from NDL17					
NDL35	N 08° 25,215' / E 020° 38,187'					
Gnd speed-Kts	70	90	100	120	140	160
Descent gradient 5,0%	350 fpm	450 fpm	500 fpm	600 fpm	700 fpm	800 fpm

CIRCLE TO LAND
MDA (H) 2100' (460')
NIGHT: Not Authorized

changes : final approach course & hold course typos

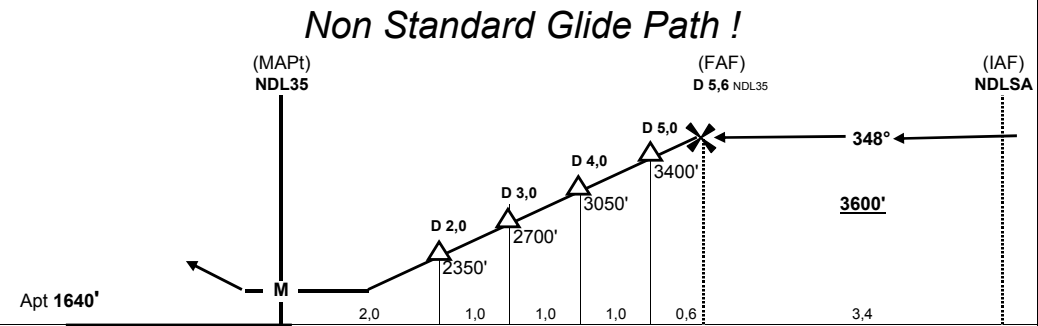
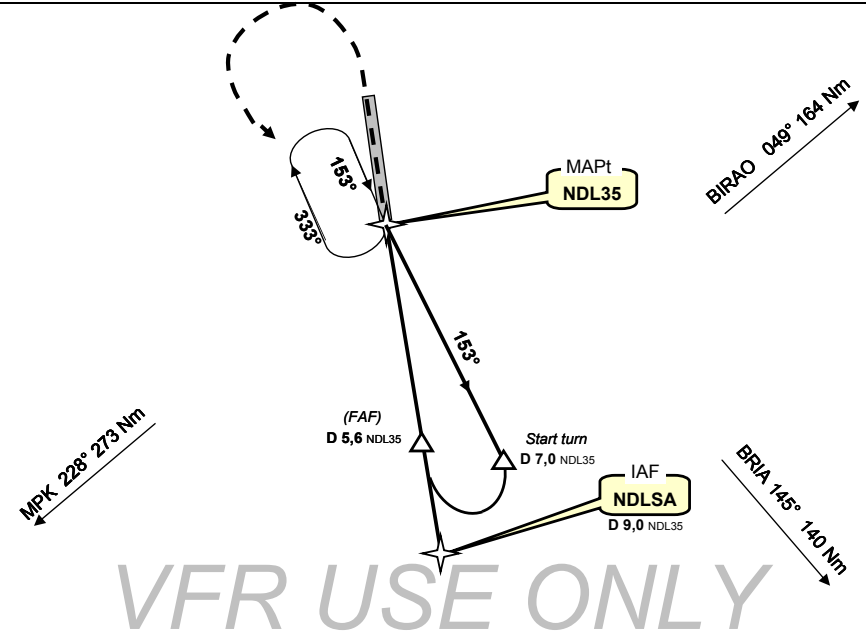
FEFN
NDL

Jungle plates
15-juin-08

N'Délé, Centrafrique
GPS Rwy 35

Auto Info : 118,10 VHF			Brazza : 127,10 VHF 8903 HF			3500'
Bangui APP & TWR : 119,70						
Wpt	Final Apch Crs	MDA (H)	Apt Elev	Rwy Lenght	Rwy Texture	
NDL35	348°	2100' (460')	1640'	1500 m 4900'	Laterite	MSA NDL35 Grid Mora 4200'

Missed App : climb straight ahead to 2800', then turn left climbing to 3600' to rejoin the hold at NDL35



NDL35	N 08° 25.215' / E 020° 38.187'					
NDLSA	R 168°, 9 Nm from NDL35					
NDL17	N 08° 26.002' / E 020° 38.034'					
Gnd speed-Kts	70	90	100	120	140	160
Descent gradient 5,8%	408 fpm	525 fpm	583 fpm	700 fpm	816 fpm	933 fpm

CIRCLE TO LAND
MDA (H) 2100' (460')
NIGHT: Not Authorized

change : thr 17 coordinates & glide path