

FEFQ
KAG

Jungle Plates

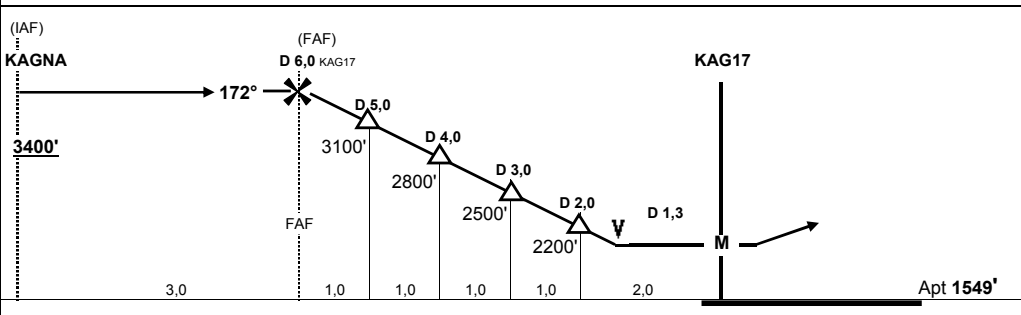
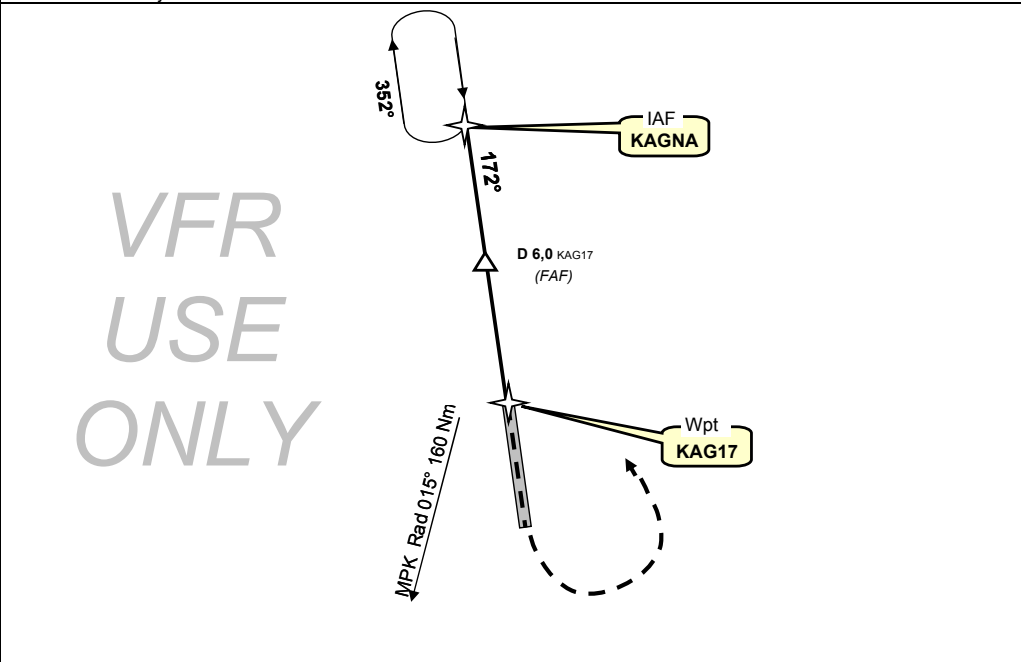
Kaga Bandoro , CENTRAFRIQUE
GPS Rwy 17

17-mai-10

TWR : Nil			Auto info 118,10 VHF			<div style="border: 1px solid black; border-radius: 50%; width: 40px; height: 40px; display: flex; align-items: center; justify-content: center; margin: 0 auto;"> 3400' </div> MSA KAG17 Wpt (MAP)
Brazza 8903 HF						
Wpt	Final Apch Crs	MDA (H)	Apt Elev	Rwy Lenght	Rwy Texture	
KAG17	172°	2000' (451')	1549'	950 m 3100'	Laterite	

Missed App : climb straight ahead to 2600', then turn left climbing to 3400' to rejoin the hold at IAF KAGNA

Contact : mathieuchassang@yahoo.fr
 Jungle Plates Airport Information Publication 2008 ©



KAG17	N 06° 59,554' / E 019° 10.606'						CIRCLE TO LAND MDA (H) 2000' (451') NIGHT: Not Authorized
KAGNA	R 352°, 9 Nm from KAG17						
KAG35	N 06° 58,987' / E 019° 10.691'						
Gnd speed-Kts	70	90	100	120	140	160	
Descent gradient 5,0%	350 fpm	450 fpm	500 fpm	600 fpm	700 fpm	800 fpm	